

Introduction ————— 4 - 5

01 PG 6 - 25

Brushes & Brush Kits

- Optimum™ Mens Brushes & Brush Kits
- Optimum™ Ladies Brushes & Brush Kits
- Optimum™ Master Brushes, Kit & Stand
- Optimum™ Ceramic Carving Instruments & Kits
- Optimum™ Replacement Tips
- MPF Synthesis Brushes & Brush Kit
- MPF Zirconia Stain Brushes & Brush Kit
- Evolution Master Brushes & Brush Kits
- Evolution Ceramic Sculpting Instruments & Kits
- Evolution Replacement Tips
- Signature Brushes & Instruments
- MPF Spring Activated Brushes & Brush Kits
- Signature & MPF Spring Activated Replacement Tips
- MPF Classic Brushes & Brush Kit

02 PG 26 - 33

Palettes

- Marble Ceramic Palette
- Glass Ceramic Palette
- Evolution Master Ceramic Palette
- Stain/Opaque Palette
- MPF Comp Tray
- CAD Artistry Mixing Palette

03 PG 34 - 43

Tools & Accessories

- MPF Crown Holder
- Veneer & Crown Stabilizing Paste
- Peg Fix
- Honeycomb Ceramic Stands
- MPF Texture-Eyes
- Rainbow Drops
- All-Bright Diamond Paste
- Spin Fix Firing Aid
- Agate Mixing Spatula
- Ceramomix™ Zirconia Spatula
- Ceramic Table Mat
- Ceramic Brush Hydrator
- Brush Pool
- Liquid Dispensers
- Ti Waxer Carving Instruments & Replacement Tips

04 PG 44 - 51

Rotary Instruments

- MPF White Pearl Series
- ZMax
- Zirco Cera GSS
- MPF Rainbow Ceramic Polisher
- Polishing Brushes
- Aluminium Oxide Abrasive Disc

05 PG 52 - 59

Key Opinion Leaders

- Nondas Vlachopoulos - Jan Schünemann
- Oriol de la Mata y García - Ricardo Schäfer
- Norberto Ruiz - Daniele Rondoni
- Maria Spanopoulou
- Javier Vasquez - Simon Newbold
- Andreas Chatzimpatzakis - Leonidas Dimitriou

06 PG 60 - 62

Pilot Lab

- Nondas Vlachopoulos

Introduction



High quality, functional, affordable products and attention to detail are the key ingredients to a successful product range.

“

At MPF Brush Co., our primary goal is to continue to improve our customer's performance by offering a unique range of laboratory hand tools, brushes, palettes, accessories and rotary instruments at a reasonable price, without compromising on quality.

Collaborating with opinion leading dental technicians from around the world has enabled us to 'think outside the box' when designing unique dental ceramic hand tools.

We are especially proud of our Optimum™ range of brushes and instruments, designed by Nondas Vlachopoulos. MPF Brush Co. joined forces with Nondas, an internationally respected dental technician, to create a highly evolved range of products, paying extreme attention to detail in the way they function, feel and look.

The new MPF Synthesis Brush uniquely '*combines elements*' by fusing two types of brush hair, kolinsky and synthetic, into one brush tip.

Due to industry demand, we're developing a range of CAD-CAM products that will undoubtedly be successful in the mainstream and essential to every laboratory.

Our latest Zirconia Stain Brushes are made completely from ABS plastic for zero contamination of staining liquids from metal ferrules.

We have created several new accessory items such as Rainbow Drops, the Crown & Veneer Holder, a Crown & Bridge Stabilizing Paste, variations of the Honeycomb Stand with pins to suit all implant bound cases and for sintering in the hot zone of your furnace, Peg Fix, an environmentally safe refractory stabilizing paste, and Texture-Eyes, a brilliant copper paste used to identify your anatomy and contouring needs.

Thanks to our loyal customers, MPF Brush Co. has been producing dental instruments for some time now and our product range is rapidly growing. It is you that drives us to create new and innovative tools that are not only beautiful and ergonomic in design, but are functional and affordable. We'd like to take this opportunity to thank all of our customers worldwide for their ongoing support.

”

George Papadopoulos ^{CDT}
Director

01

Brushes & Brush Kits





MPF BRUSHES & BRUSH KITS

The Optimum™ range of brushes and instruments, designed by Nondas Vlachopoulos, is a revolution in the dental ceramic brush industry.

It's balanced, lightweight, aluminum structure and ergonomic design make this brush handle by far the greatest design ever to be released onto the dental ceramic market, hence the name "Optimum".

With its streamlined curves, the handle positions itself perfectly in your grip, allowing for full control of your build-up technique.

This range was designed with astute attention to detail; the metal point on the end of the handle allows you to punch your dowel pins from the base of your models

without having to change tools, the perforated posterior shaft acts as a mini hammer for condensing your ceramic... each and every detail has been highly considered.

The MPF Brush Co. philosophy is to insist on the highest quality and most durable materials for our products. With this as a key focus, we have used kolinsky sable hair on all brush tips. Being a natural product, it is far superior to any synthetic hair the market has to offer.

Once you try this new range we're sure you'll never look back!



Optimum™ Mens : Brushes & Brush Kits

Spring activated tip. Perfectly balanced.
Replaceable, premium kolinsky sable brush tips. Integrated rear pin design allows you to release pinned die-segments from model base.

Item No. 102-0004

Optimum™ Spring Ceramic Brush
Size 4, Citrus

Item No. 102-0006

Optimum™ Spring Ceramic Brush
Size 6, Champagne

Item No. 102-0008

Optimum™ Spring Ceramic Brush
Size 8, Midnight Blue



Item No. 102-2000

Optimum™ Spring 3-in-1 Brush Kit
Citrus

Item No. 102-3000

Optimum™ Spring 3-in-1 Brush Kit
Champagne

Item No. 102-4000

Optimum™ Spring 3-in-1 Brush Kit
Midnight Blue



Optimum™ Ladies : Brushes & Brush Kits



Item No. 103-0004

Optimum™ Ladies Spring Ceramic
Brush, Size 4, Pink



Item No. 103-0006

Optimum™ Ladies Spring Ceramic
Brush, Size 6, Purple



Item No. 103-0008

Optimum™ Ladies Spring Ceramic
Brush, Size 8, Midnight Blue



Item No. 103-1000

Optimum™ Ladies Spring 3-in-1
Brush Kit, Pink

Item No. 103-2000

Optimum™ Ladies Spring 3-in-1
Brush Kit, Purple

Item No. 103-3000

Optimum™ Ladies Spring 3-in-1
Brush Kit, Midnight Blue

Optimum™ : Master Brushes, Kit & Stand



All the tools you need in one package.
Replaceable, premium kolinsky sable brushtips.

Item No. 102-0009

Optimum™ Ceramic Brush, Stain



Item No. 102-0010

Optimum™ Ceramic Brush, Opaque

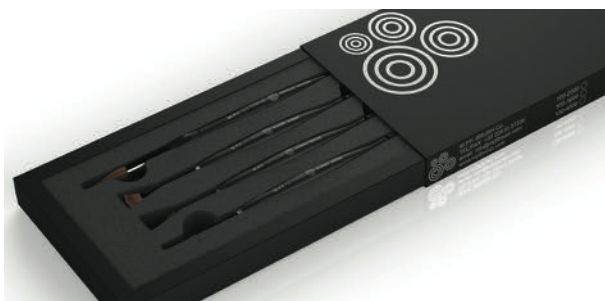


Item No. 102-0011

Optimum™ Ceramic Brush, Contour



The Master Brush Kit includes one
Spring Ceramic Brush in your choice
of size; 4, 6 or 8.



Item No. 102-5004 Optimum™ Spring Master Kit, Size 4

Item No. 102-5006 Optimum™ Spring Master Kit, Size 6

Item No. 102-5008 Optimum™ Spring Master Kit, Size 8

Item No. 104-4000

Optimum™ Instrument Bench Stand

** Brushes sold separately.*

Optimum™ : Ceramic Carving Instruments & Kits

Precision ceramic carving tools. Perfectly balanced. Replaceable tips. Ergonomic handles.

Item No. 104-0001
Optimum™ Ceramic Carving
Instrument, Flat Blade

Item No. 104-0002
Optimum™ Ceramic Carving
Instrument, Contra Blade

Item No. 104-0003
Optimum™ Ceramic Carving
Instrument, Dagger

Item No. 104-0004
Optimum™ Ceramic Carving
Instrument, Lingual Spoon



Item No. 104-3000
Optimum™ Carving Instrument Kit (4)



Item No. 104-2000
Optimum™ Instrument Kit with Instrument Stand

Optimum™ : Replacement Tips

PER PACK
2 pcs.

Replaceable, premium quality tips for all your Optimum™ tools.

Item No. 102-1002
Size 2



Item No. 102-1004
Size 4



Item No. 102-1006
Size 6



Item No. 102-1008
Size 8



Item No. 102-1009
Stain Tip



Item No. 102-1010
Opaque Tip



Item No. 102-1011
Contour Tip



Item No. 104-1001
Flat Blade



Item No. 104-1002
Contra Blade



Item No. 104-1003
Dagger



Item No. 104-1004
Lingual Spoon



innovation

We strive to create products that will keep you ahead of your game.

Our innovative 'Spring Activated' tip reshapes and contours the brush hair with one simple 'flick', leaving it ready for application time after time.



MPF SYNTHESIS : Brushes & Brush Kit

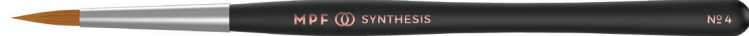


The latest brush in our range and a practical, affordable addition to your ceramic build up department, the MPF Synthesis fuses both the humid properties of kolinsky and the maneuverability of synthetic hair, giving you the best of both elements.

Item No. 105-2000
MPF Synthesis, Size 2



Item No. 105-4000
MPF Synthesis, Size 4



Item No. 105-6000
MPF Synthesis, Size 6



Item No. 105-8000
MPF Synthesis, Size 8



Item No. 105-0000
MPF Synthesis 4-in-1 Brush Kit



The Synthesis Philosophy

NEW

Synthetic hair

Kolinsky hair



MPF ZIRCONIA STAIN BRUSH



A revolutionary solution for
your stain needs.



MPF ZIRCONIA STAIN BRUSH : Brushes & Brush Kit

NEW

Metal and rust free. Plastic handle and ferrule.
Synthetic hair. Ideal for water based liquids and
acids. Non-replaceable brush tips.

Item No. 105-1001

MPF Zirconia Stain Brush, Size 1

Item No. 105-1002

MPF Zirconia Stain Brush, Size 2

Item No. 105-1003

MPF Zirconia Stain Brush, Size 3



Photos by Bill Marais

Disa Dental Studio Inc. is a high-end, two person lab specialising in complex implant & neuromuscular cases and aesthetic restorations. Bill Marais, co-owner and lab technician, has extensive experience and training in all aspects of dental technology including crown and bridge, neuromuscular dentistry, dentures, neuromuscular dentures and implants.

Contact Details

Portland, Oregon 97210, USA
tel 1 503 954 3356
email bill.marais@mac.com



Item No. 105-1000

MPF Zirconia Stain 3-in-1 Brush Kit

Evolution : Brushes, Master Brushes & Brush Kits



Lightweight, aluminium handle. Carbon fiber grip.
Replaceable, premium kolinsky sable brushtips.

Item No. 116-0004
Evolution Brush, Size 4

Item No. 116-0006
Evolution Brush, Size 6

Item No. 116-0008
Evolution Brush, Size 8

Item No. 116-0009
Evolution Stain Brush

Item No. 116-0010
Evolution Glaze Brush

Item No. 116-0011
Evolution Contour Brush



Item No. 116-2004 Evolution Master Brush Kit, Size 4

Item No. 116-2006 Evolution Master Brush Kit, Size 6

Item No. 116-2008 Evolution Master Brush Kit, Size 8

Item No. 104-4000

Optimum™ Instrument Bench Stand

** Brushes sold separately.*



Evolution : Ceramic Sculpting Instruments & Kits

Precision ceramic sculpting tools. Perfectly balanced. Replaceable tips. Carbon fiber grip.

Item No. 117-0001
Evolution Ceramic Sculpting
Instrument, Flat Blade

Item No. 117-0002
Evolution Ceramic Sculpting
Instrument, Angle Blade

Item No. 117-0003
Evolution Ceramic Sculpting
Instrument, Razor

Item No. 117-0004
Evolution Ceramic Sculpting
Instrument, Lingual Spoon



Item No. 117-2000
Evolution Sculpting Instrument Kit (4)



Item No. 104-4000
Optimum™ Instrument Bench Stand

** Instruments sold separately.*

For Replacement Tips, see page 20.

Evolution : Replacement Tips



Replaceable premium quality tips for all your Evolution tools.

Item No. 116-1004
Size 4



Item No. 116-1006
Size 6



Item No. 116-1008
Size 8



Item No. 116-1009
Stain Tip



Item No. 116-1010
Glaze Tip



Item No. 116-1011
Contour Tip



Item No. 117-1001
Flat Blade



Item No. 117-1002
Angle Blade



Item No. 117-1003
Razor Blade



Item No. 117-1004
Lingual Spoon



excellence

Our products are made by
technicians for technicians.

We have recently introduced
fusion technology into our brush
tips, combining natural hair with
synthetic, giving you the best of
both materials in one tip.



MPF x JUNGO ENDO : Stay Close to Nature



NEW

Item No. 118-0000

Jungo Endo Signature Brush, Black

Item No. 118-1000

Jungo Endo Signature Brush, Red

Item No. 118-1500

Jungo Endo Signature Brush, Grey



MPF SIGNATURE BRUSH : Special Edition



NEW

Item No. 118-2000

MPF Signature Brush Special Edition,
Copper



MPF x STEFAN PICHA : Stipple

NEW

Item No. 118-3000

Stipple by Stefan Picha



MPF x JOSHUA POLANSKY : Scribe™ Instrument

Item No. 107-0000

Scribe™ Instrument by Joshua Polansky





MPF SPRING ACTIVATED : Brushes & Brush Kits

Innovative spring activation system. The perfect tip with a simple 'flick'. Replaceable premium kolinsky sable brushtips.

Item No. 100-0004

MPF Spring Brush, Kolinsky Size 4
Silver

Item No. 100-0006

MPF Spring Brush, Kolinsky Size 6
Light Blue

Item No. 100-0008

MPF Spring Brush, Kolinsky Size 8
Black



Item No. 100-2000

MPF Spring 3-in-1 Brush Kit
Silver



Item No. 100-3000

MPF Spring 3-in-1 Brush Kit
Light Blue



Item No. 100-4000

MPF Spring 3-in-1 Brush Kit
Black

Replaceable premium quality tips for all your
Signature & MPF Spring Activated Brushes.



Signature : Replacement Tips

Item No. 118-1001

Jungo Endo Signature Brush Tips



Item No. 118-3001

Stipple by Stefan Picha Brush Tips



Item No. 118-2001

MPF Signature Brush Special Edition
Brush Tips



MPF SPRING ACTIVATED : Replacement Tips

Item No. 100-1002

Size 2



Item No. 100-1004

Size 4



Item No. 100-1006

Size 6



Item No. 100-1008

Size 8



MPF CLASSIC : Brushes & Brush Kit



NEW

Premium kolinsky sable brushtips. New plastic handle and ferrule. Tip de-humidifying system.

Item No. 105-0002

MPF Classic Brush, Size 2

Item No. 105-0004

MPF Classic Brush, Size 4

Item No. 105-0006

MPF Classic Brush, Size 6

Item No. 105-0008

MPF Classic Brush, Size 8

Item No. 105-0009

MPF Classic Stain Brush

Item No. 105-0010

MPF Classic Opaque Brush

Item No. 105-0011

MPF Classic Contour Brush

Item No. 105-0001

MPF Classic 4-in-1 Brush Kit



02

Palettes





MPF PALETTES

Palettes are tools used daily by the dental ceramist and are a necessary accessory in every ceramic laboratory.

They should be functional and well designed (ensuring maximum productivity) and highly aesthetic; after all, the technician will likely be looking at it for a good part of the day! Our range of palettes tick all the boxes when it comes to smart, savvy design.

Our new MPF Comp Tray is a clever way to store your composite gear in one beautifully designed container. With it's non-slip work surface, non-stick silicon stain palette and interchangeable inserts, we're proud to offer this innovative solution to laboratories around the world.

The Ceramic Palette offers both marble and glass work surfaces,

with unique humidifying technology incorporated into the surface.

The Stain/Opaque Palette allows easy access to ceramic medium, and is designed to prevent materials both from spilling and drying out.

The Evolution has a sleek, contoured, ergonomic design. Soft touch and user friendly, it allows easy access to materials and work surface.

And last but not least, we offer the perfect solution for ceramists working with CAD-CAM Technology, the CAD Artistry Mixing Palette.

At MPF Brush Co., we've set a new benchmark for ceramic palette function and design!

Marble Ceramic Palette

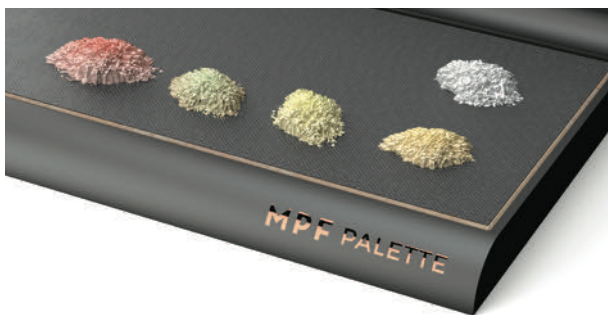
Italian marble surface with nylon worksheet.
Durable base. Capillary action keeps ceramic
mix continuously wet.

Item No. 115-1000

Marble Ceramic Palette

*Includes two nylon work sheets and one
plastic water bottle.*

The unique marble used to create
this palette allows controlled
amounts of water to permeate and
wet the nylon worksheet, ensuring
a uniform, consistent and workable
ceramic mix. The nylon work sheet
covering the marble is kinder to
Kolinsky brushes and helps keep a
finer point for longer periods of time.



Item No. 115-1001 Nylon Palette Worksheets, 2/pk

Item No. 115-1002 Replacement Marble

Glass Ceramic Palette

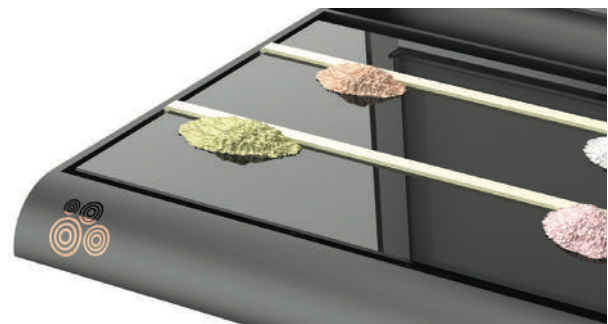
Glass work surface. Durable base. Synthetic leather strips keep ceramic mix continuously wet.

Item No. 115-0000

Glass Ceramic Palette

Includes one agate spatula, four synthetic leather strips and one plastic water bottle.

The Glass Ceramic Palette, created for ceramists who prefer a glass working surface, uses a system of synthetic leather strips to ensure your medium remains wet. Water from the base permeates up through the strips and into the ceramic stack, creating a homogenous ceramic mix.



Item No. 115-0001 Palette Absorption Strips, 4/pk

Item No. 115-0002 Replacement Glass

Evolution Master Ceramic Palette

Glass work surface. Synthetic leather strips keep ceramic mix continuously wet. Concealed stain palette drawer.

Item No. 115-4000

Evolution Master Ceramic Palette,
Black

Item No. 115-4100

Evolution Master Ceramic Palette,
White

Includes one sponge, synthetic strips, one nylon worksheet and one stain brush.

The Evolution Master Ceramic Palette has a sleek, contoured, ergonomic design and is user friendly, allowing easy access to your ceramic materials without obtrusive, robust parts inhibiting your movements to the anterior portion of the tray.

Item No. 115-4001 Evolution
Replacement Nylon Worksheet

Item No. 115-4005 Evolution
Absorbent Replacement Sponge

Item No. 115-4003 Evolution
Synthetic Strips, 4/pk

Item No. 115-4006 Evolution
Replacement Glass Tray

Item No. 115-4101 Evolution
Replacement White Glass Tray



Stain/Opaque Palette

Smart storage solution for stain and paste opaque materials. Durable plastic structure. Tight seal lid.

Item No. 115-5000

Stain/Opaque Palette, Black

Item No. 115-6000

Stain/Opaque Palette, White

The unique, angled, step-type design of the Stain/Opaque Palette allows easy access to materials. Reservoirs have a very unique design, elongated towards the rear so that material flows to the back of the cup, preventing spillage. The tight seal lid prevents oxygen from drying materials out. A colour chart helps keep material colours in order.



MPF COMP TRAY

NEW

Smart storage solution for composite tools.
Non-stick silicon stain palette. Interchangeable
inserts. Cleaning sponge.

Item No. 115-9000

MPF Comp Tray

*Includes two silicon stain palettes and two
synthetic sponges.*

The MPF Comp Tray is made from a machined piece of polyurethane, milled with a textured pattern on its surface allowing for adhesion of composite materials. It contains a non-stick silicon stain palette and sponge to keep tools clean while you work. Inserts can be placed on either side to accommodate left and right handed technicians.



Item No. 115-9001 Silicon Stain Palette Replacement

Item No. 115-9002 Synthetic Sponge Replacement

Item No. 115-9003 Polyurethane Replacement Sheet



CAD Artistry Mixing Palette

Moisture and consistency control for ceramic material. Dual-working platforms. CAD-CAM Technology.

Item No. 115-7000

CAD Artistry Mixing Palette

Includes sponge, absorbent nylon mixing sheet and synthetic absorbent strips.

The CAD Artistry Mixing Palette was designed with two options of humidification to maintain the correct level of moisture and consistency of ceramic material. Choose between working on a nylon sheet or using the synthetic strips.

Eleven stain compartments act as storage for your choice of stains and colours.

This palette is the perfect solution for ceramists working with CEREC/IN-LAB and CAD-CAM technology.



03

Tools & Accessories





MPF TOOLS & ACCESSORIES

We take pride in creating meticulously designed, highly functional, attractive dental instruments.

Although the manufacturing process of dental ceramics has remained relatively unchanged throughout the years, the tools technicians use to create ceramic restorations are continuously evolving.

At MPF Brush Co. we strive to remain one step ahead of the rest by producing high quality, innovative instruments based not only on our own extensive experience, but the expertise of some of the industry's finest technicians.

Utilising materials such as aluminum, resin and carbon fiber has resulted in an impressive, functional product offering at an affordable price.

Our recent innovations within the last 12 months are already proving to be a huge success, with technicians around the world offering positive feedback.

Peg Fix, a product which required immense research and development, is a refractory stabilizing material with amazing properties and great consistency, which flows freely from its dispenser and leaves absolutely no residue on crowns, veneers or bridges no matter what material they are made from. Created from polycrystalline fibers, this product is not only revolutionary, but is made from premium ingredients that are safer for our planet.

MPF CROWN HOLDER

NEW

Assistive tool to safely hold crowns in place while working, without chipping or marking.

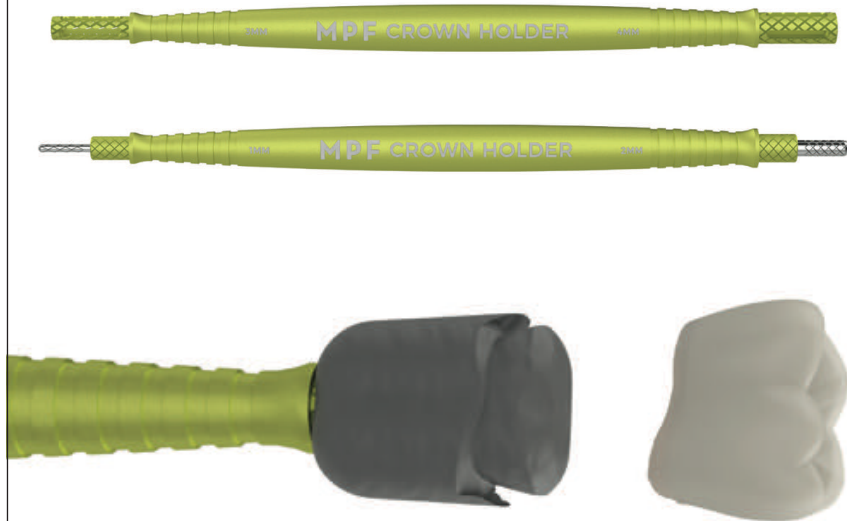
Item No. 152-0001

MPF Crown Holder 3 - 4mm

Item No. 152-0002

MPF Crown Holder 2 - 1mm

The MPF Crown Holder is an instrument designed to successfully hold crowns in place while working, without chipping or marking. Special gum material is applied to the desired end (retention knurl or cut out), onto which the crown is positioned. The adhesive gum is guaranteed not to leave sticky, greasy residue on the crown or on fingers.



Item No. 152-0000 MPF Crown Holder Complete Kit

Includes one 4 - 3mm handle, one 2 - 1mm handle, 1 pack White Gum Material and 1 pack Black Gum Material.

Item No. 152-0003 MPF White Gum Material

Item No. 152-0004 MPF Black Gum Material

Veneer & Crown Stabilizing Paste

NEW



A stabilizing paste used to safely adhere metal and metal free prosthesis to your model dies with superior holding properties. Burns residue free.

Item No. 150-0001 Veneer & Crown Stabilizing Paste

Peg Fix

NEW



A new, revolutionary, environmentally friendly refractory stabilizing paste made from PCW fibers, suitable for firing with metal or metal free prosthesis. Can be completely removed from your prosthesis with a short blast of compressed air, leaving it totally residue free.

Item No. 150-0002 Peg Fix (1 tube of 17cc)

Item No. 150-0003 Peg Fix (3 tubes of 17cc)

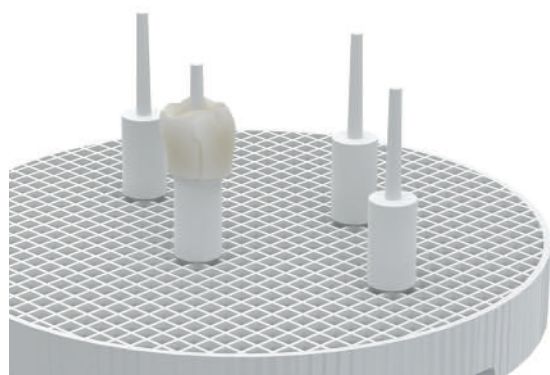
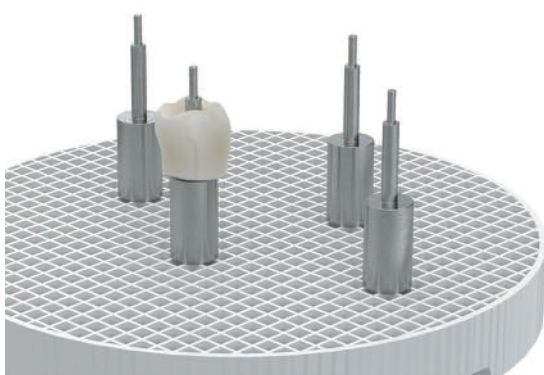
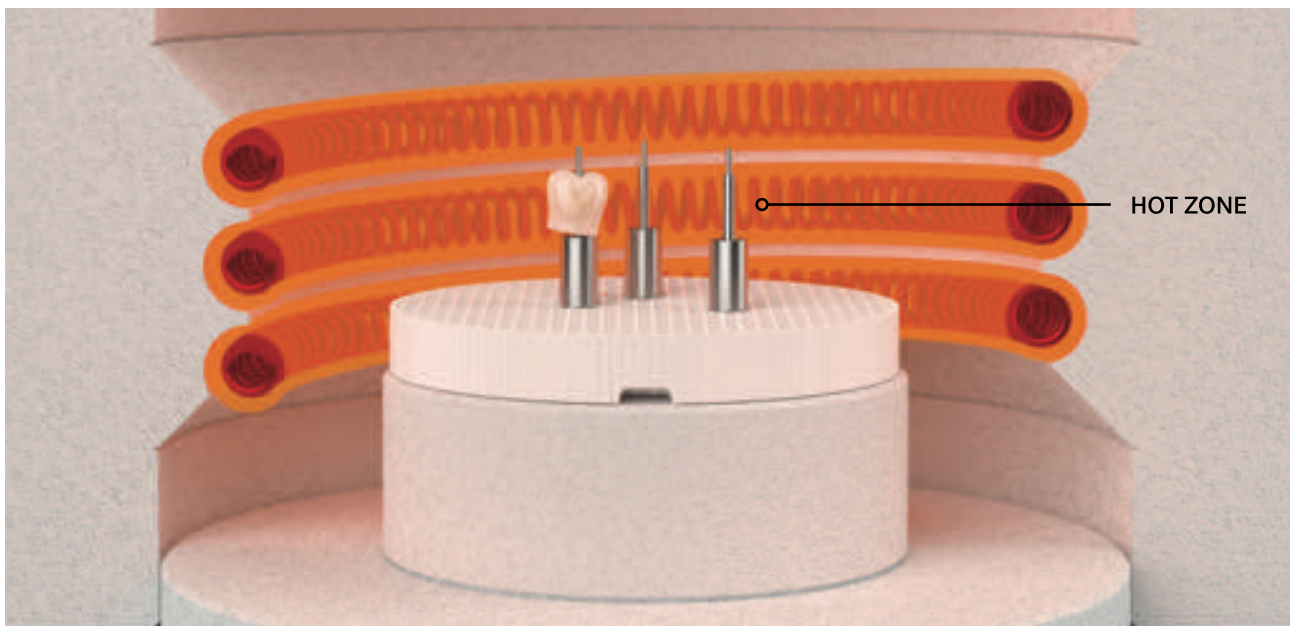
Instead of commonly used Ceramic (A.S.) fibers, which are classified as 1-B according to Regulation (EU) 1272/2008, our materials have been based on polycrystalline fibers which have not been classified as such, according to this directive.

Honeycomb Ceramic CR & BR Stand

FOR IMPLANTS

NEW

All new 'hot zone' technology. Zirconia & metal pins with an elevated base for crowns and implants.



The Hot Zone Philosophy - Implants

Zirconia and metal pins with a cylindrical, elevated base instantly raise crowns and implants into the prime 'hot zone' position of your ceramic firing oven.

Item No. 114-3000 Honeycomb Stand with 4 Alumina Pins

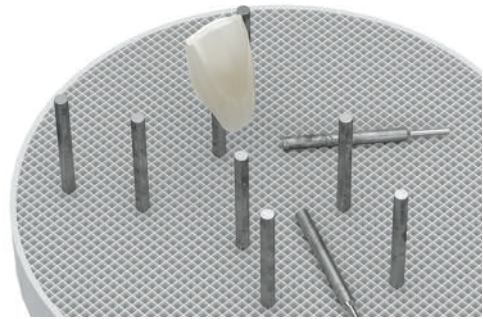
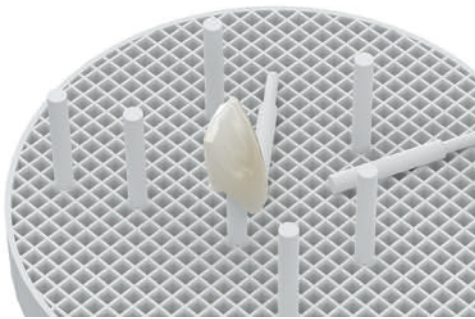
Item No. 114-3001 Alumina Pins, 4pcs

Item No. 114-0000 Honeycomb Stand with 4 Metal Pins

Item No. 114-0001 Metal Pins, 4pcs

Honeycomb Ceramic CR & BR Stand

NEW



Item No. 114-1000 Honeycomb Stand with 10 Ceramic Pins

Item No. 114-1001 Ceramic Pins, 10pcs

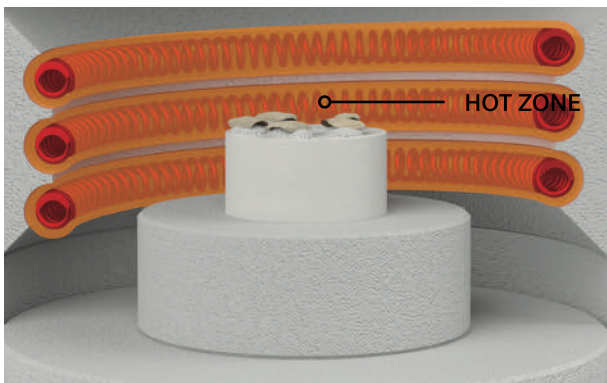
Item No. 114-2000 Honeycomb Stand with 10 Metal Pins

Item No. 114-2001 Replacement Metal Pins, 10pcs

A ceramic firing tray for Crowns & Bridges that can withstand temperatures of up to 1500°C.

Honeycomb Ceramic Veneer Stand

FOR VENEERS



The Hot Zone Philosophy - Veneers

Designed at an elevated height of 20mm, this honeycomb stand instantly raises veneers into the prime 'hot zone' position of your ceramic firing oven.

Item No. 114-4000 Honeycomb Ceramic Veneer Stand

MPF TEXTURE-EYES

NEW



An amazing copper paste that, when painted directly onto the surface of your crowns, veneers, bridge work or gypsum model, allows you to visualize and accurately replicate morphology and tooth structure. Quick dry, alcohol free solution. Steam clean residue within seconds.

Item No. 153-0000 MPF Texture-Eyes, 10ml

Rainbow Drops

NEW



Item No. 151-0000 MPF Rainbow Drops - Kit

Includes all 6 colours

High quality colourants for your ceramic mix. 10ml p/bottle.

Item No. 151-0001 Red

Item No. 151-0002 Blue

Item No. 151-0003 Orange

Item No. 151-0004 Brown

Item No. 151-0005 Yellow

Item No. 151-0006 Violet

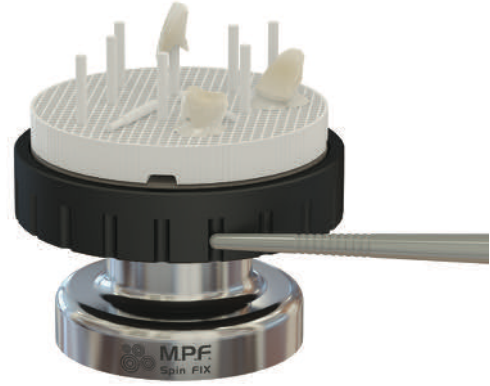
All-Bright Diamond Paste



Item No. 113-1000 All-Bright Diamond Paste, 11gr.

Apply a small amount of paste after polishing ceramic or composite surfaces for a lustrous, high shine finish.

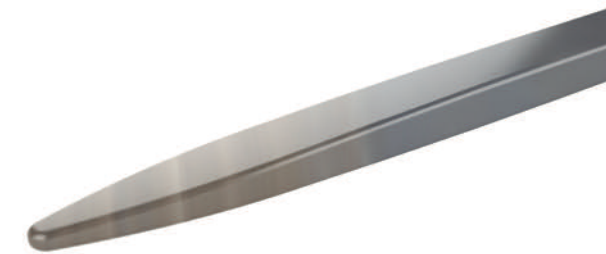
Spin Fix Firing Aid



Item No. 106-0000 Spin Fix Firing Aid

Ensures easy access and stability to crowns placed onto the tray, for ceramists to complete finishing touches with ease.

Agate Mixing Spatula



Item No. 108-0000 Agate Mixing Spatula

Made from Brazilian Agate Stone, with the tail end shaped at an angle for easy extraction of ceramic powder.

Ceramomix™ Zirconia Spatula

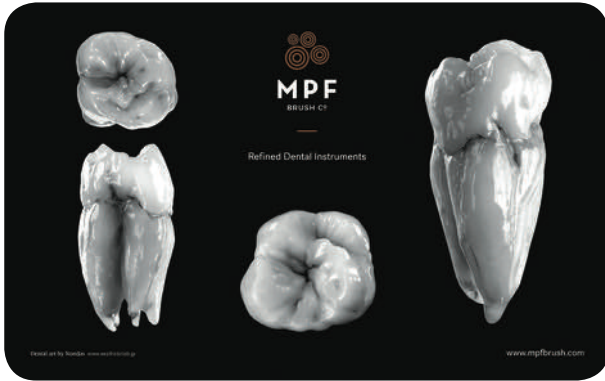


Item No. 108-1000 Ceramomix™ Zirconia Spatula

Ceramic mixing instrument that prevents contamination of ceramic material.

Ceramic Table Mat

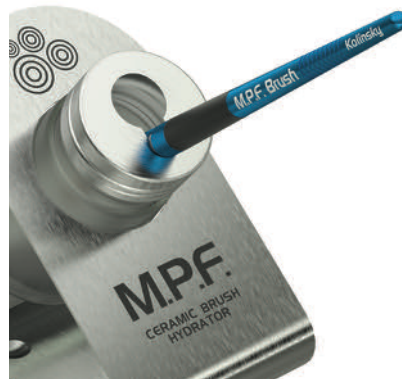
NEW



Item No. 110-0000 Ceramic Table Mat

Our stylish Ceramic Table Mat, made from durable plastic and easily cleaned, boasts the amazing dental work of our Key Opinion Leader, Nondas.

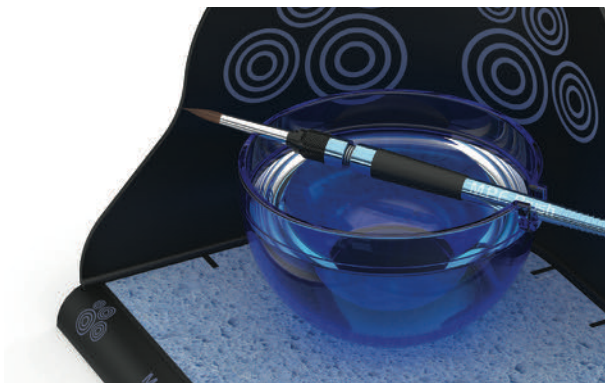
Ceramic Brush Hydrator



Item No. 109-0000 Ceramic Brush Hydrator

An innovative solution for keeping your Kolinsky brush tip moist while working.

Brush Pool



Item No. 111-0000 Brush Pool Complete

Item No. 111-0001 Brush Pool Replacement Bowl

Item No. 111-0002 Brush Pool Replacement Sponge

Keeps your work surface clean from excess water while you work. Suitable for left and right handed technicians.

Liquid Dispensers



Item No. 115-0003 Empty Modelling Liquid Dispenser 100ml

Item No. 115-0004 Empty Stain Liquid Dropper 20ml

Item No. 115-0005 Empty Modelling / Stain Liquid Dropper Kit, 100ml & 20ml

Ti Waxer : Carving Instruments & Replacement Tips

Lightweight, titanium handle. Replaceable stainless steel blades. Two instruments in one.

Item No. 119-0001

Ti Waxer Carving Instrument,
Spoon/Fine Dropper, Red

Item No. 119-0002

Ti Waxer Carving Instrument,
Large LeCron/Angled Spade, Blue

Item No. 119-0003

Ti Waxer Carving Instrument,
Small LeCron/Large Dropper, Purple

Item No. 119-2000

Ti Waxer Carving Instrument Kit (3)



Item No. 119-1001

Ti Waxer Replacement Tips
Spoon

Item No. 119-1002

Ti Waxer Replacement Tips
Fine Dropper

Item No. 119-1003

Ti Waxer Replacement Tips
Large LeCron

Item No. 119-1004

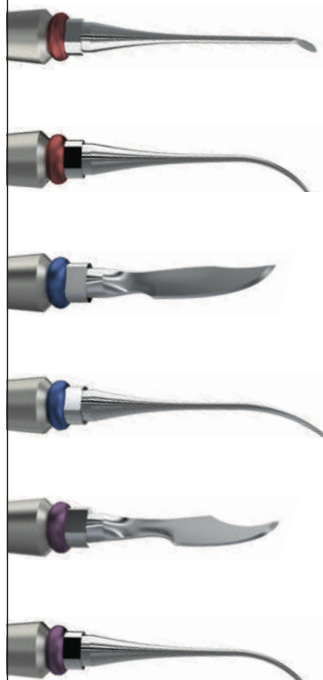
Ti Waxer Replacement Tips
Angled Spade

Item No. 119-1005

Ti Waxer Replacement Tips
Small LeCron

Item No. 119-1006

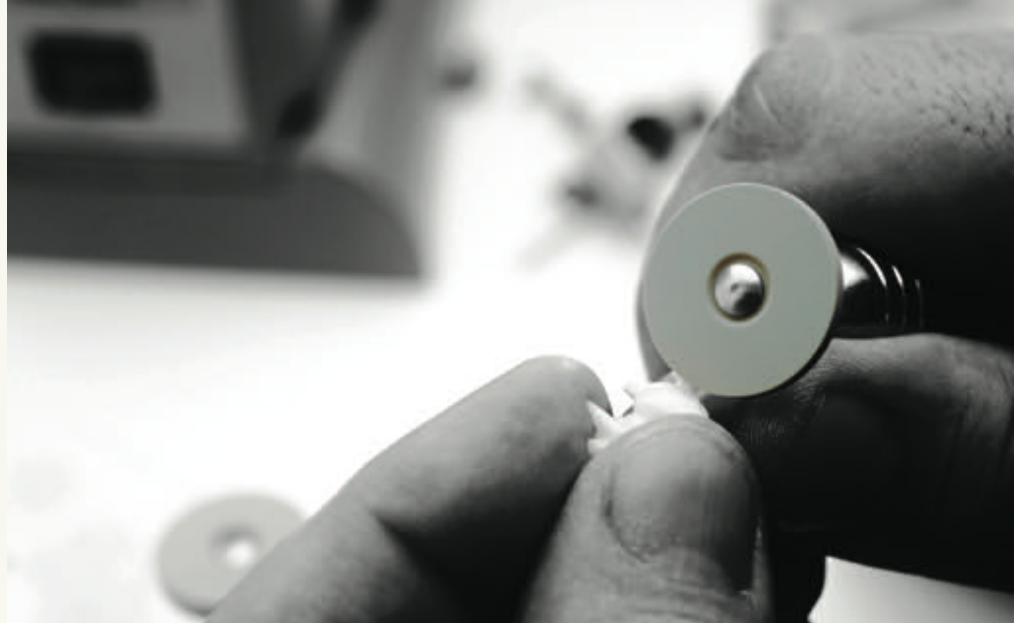
Ti Waxer Replacement Tips
Large Dropper



04

Rotary Instruments





MPF ROTARY INSTRUMENTS

Our rotary instruments are made using the latest materials and state-of-the-art technology.

The dental ceramic industry's steady trend toward CAD-CAM Technology, utilising materials such as alumina and zirconia, has led us to follow suit and produce rotary instruments accordingly. Our range is constantly finding its foundations within the competitive dental abrasives market internationally.

With evolved ceramic materials such as lithium disilicate being used in the dental industry today, we saw the need for a multi-purpose, diamond impregnated set of abrasive stones which can abrade several materials with ease. Our White Pearl Series has been created for this task, working at 13,000 to 15,000 RPM and leaving a smoothly abraded surface.

Due to zirconia's hardness and sensitivity to heat, there was a great need for rotary instruments that could cut and abrade this material with minimal heat generation.

MPF Brush Co. has overcome this obstacle with ZMax Diamond Impregnated Discs. The high content, fine diamond particle creates a superb zirconia cutting instrument with an exceptional life span; more than double the durability of any product on the market today! Materials can be cut and abraded with very little pressure from the hand piece, creating less heat generation to the zirconia substructure.

MPF WHITE PEARL SERIES

NEW

The ultimate rotary tool for
the pearliest whites.



46 - 47

MPF WHITE PEARL SERIES

FOR ALL FIRED DENTAL CERAMIC MATERIAL

The ultimate abrasive stones able to tackle all ceramic, zirconia and lithium di silicate materials at phenomenal speed.

Item No. 140-0001

White Pearl Large Disc, 22 x 4.5mm



Item No. 140-0002

White Pearl Small Disc, 15 x 3.5mm



Item No. 140-0003

White Pearl Disc, 22 x 2mm



Item No. 140-0004

White Pearl Thin Disc, 22 x 0.7mm



Item No. 140-0005

White Pearl Small Barrel, 4.8 x 13mm



Item No. 140-0006

White Pearl Large Barrel, 6.5 x 13mm



Item No. 140-0007

White Pearl Cone, 3.5 x 11mm



Item No. 140-0008

White Pearl Inverted Cone, 12 x 6mm



Item No. 140-0009

White Pearl Inverted Sml Cone, 6 x 8mm



ZMax

FOR ZIRCONIA

Diamond impregnated discs for zirconia abrasion. Designed to generate minimal heat.

Item No. 120-0001

ZMax Large Disc, 22 x 4.5mm



Item No. 120-0002

ZMax Small Disc, 15 x 3.5mm



Item No. 120-0003

ZMax Disc, 22 x 2mm



Item No. 120-0004

ZMax Thin Disc, 22 x 0.7mm



Item No. 120-0005

ZMax Small Barrel, 4.8 x 13mm



Item No. 120-0006

ZMax Large Barrel, 6.5 x 13mm



Item No. 120-0007

ZMax Cone, 3.5 x 11mm



Item No. 120-0008

ZMax Inverted Cone, 12 x 6mm



Item No. 120-0009

ZMax Inverted Small Cone, 6 x 8mm



Zirco Cera GSS

FOR ZIRCONIA & CERAMIC

Diamond impregnated discs for both zirconia and ceramic abrasion. Minimal heat & pressure.

Item No. 121-0001

Zirco Cera GSS Large Disc
22 x 4.5mm

Item No. 121-0002

Zirco Cera GSS Small Disc
15 x 3.5mm

Item No. 121-0003

Zirco Cera GSS Disc
22 x 2mm

Item No. 121-0004

Zirco Cera GSS Thin Disc
22 x 0.7mm

Item No. 121-0005

Zirco Cera GSS Small Barrel
4.8 x 13mm

Item No. 121-0006

Zirco Cera GSS Large Barrel
6.5 x 13mm

Item No. 121-0007

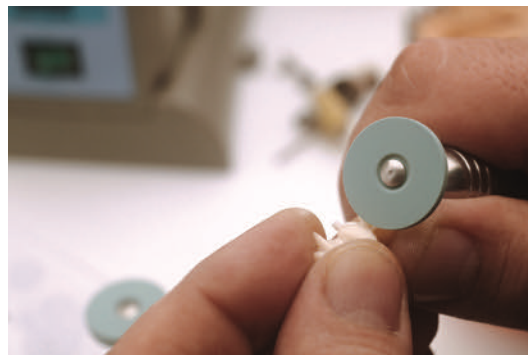
Zirco Cera GSS Cone
3.5 x 11mm

Item No. 121-0008

Zirco Cera GSS Inverted Cone
12 x 6mm

Item No. 121-0009

Zirco Cera GSS Inverted Small Cone
6 x 8mm



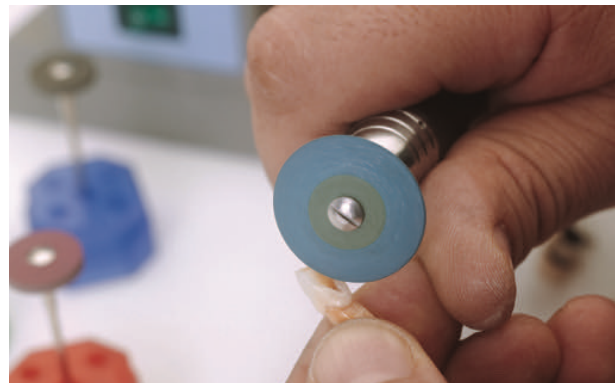
MPF RAINBOW CERAMIC POLISHERS

Premium diamond abrasive wheels for perfectly sealed ceramic or zirconia restoration.



Item No. 122-0001 MPF Rainbow Ceramic Polisher
Coarse, Red, 13000-15000 RPM

For minimal reduction on zirconia marginal regions and all types of ceramic materials.



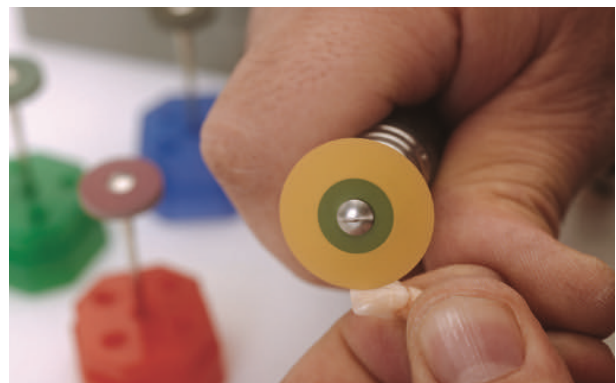
Item No. 122-0002 MPF Rainbow Ceramic Polisher
Medium, Blue, 13000-15000 RPM

For minimal reduction on zirconia marginal regions and for contouring all types of ceramic materials.



Item No. 122-0003 MPF Rainbow Ceramic Polisher
Fine, Grey, 10000-13000 RPM

For the removal of minor scratches on all types of ceramic materials.



Item No. 122-0004 MPF Rainbow Ceramic Polisher
High Shine, Yellow, 8000-10000 RPM

For the final high shine procedure on all types of ceramic and zirconia materials.

Polishing Brushes



Item No. 124-0001 Polishing Brush, 100pcs.

Item No. 124-0002 Polishing Brush, 50pcs.

Item No. 124-0003 Polishing Brush, 25pcs.

Made from natural hair for an exceptional alloy polish.



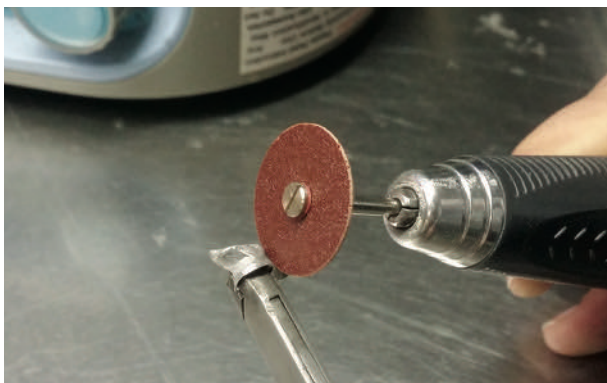
Item No. 125-0001 Polishing Mop, 100pcs.

Item No. 125-0002 Polishing Mop, 50pcs.

Item No. 125-0003 Polishing Mop, 25pcs.

Ideal thickness & hardness for polishing ceramic surfaces.

Aluminium Oxide Abrasive Disc



Item No. 123-0001 Middle 25 x 0.6 x 1.8mm, 100pcs.

Item No. 123-0002 Large 38 x 0.6 x 1.8mm, 100pcs.

Item No. 123-2003 Small 22 x 0.2-0.25 x 1.8mm, 100pcs.

Highly durable discs for ceramic and alloy restoration, without the risk of chipping or cracking the surface.

05

Key Opinion Leaders





MPF KEY OPINION LEADERS

Collaborating with experienced dental technicians allows us to create the most innovative products on the market.

MPF Brush Co. is privileged to be working alongside some of the best dental technicians around the world, who have shared their knowledge and experience to inspire some of the most successful products in our range.

We believe in the importance of informing and introducing our dealer network to them, proving we stand behind our word when it comes to providing our clients with innovative, functional products "created by technicians, for technicians".

Each and every Key Opinion Leader has had extensive training in their field and boasts an admirable

portfolio encompassing educational and practical experience. They are exquisite craftsmen and specialists in various branches of the dental field. Many have lectured and educated technicians internationally, and have left their mark on the growing dental industry in a big way.

We would highly recommend any one of them for courses in your country, and have provided their details if you'd like to contact them directly for further information or enquiries.



Nondas Vlachopoulos^{CDT}

Certain people around the world get to be known only by one name; Sting, Prince... and Nondas is one of them!

Over the past 4 years, Nondas has travelled the world extensively, spreading his knowledge and leaving a trail of happy, driven and inspired dental technicians behind him.

His love for the art and science of dental technology is witnessed and admired at his courses and recently undertaking the most challenging of tasks, the "Live Patient Case", which leaves participants wondering what just happened, and words to the effect of "how the hell can he do that in just one bake and nail it?!"

People leave his courses with a complete overdose of knowledge, inspired to continue striving for excellence.

Contact Details

45 Pleiadon St. Nea Kifisia,
14564 Athens, Greece

tel 30 210 6250287-8
email nondasdt@hol.gr

Product Reference

Pages 8 - 12
Optimum™ Range



Jan Schünemann^{MDT}

Jan Schünemann, born in Hamburg Germany, graduated with Masters as a dental technician in 1992.

After a year of practical experience he went on to work in commercial laboratories in Bielefeld. Jan later went on to work in journalism for "Quintessenz der Zahntechnik", then in product development, marketing and photography.

He founded an institution for further education in 1988, and both lectures and consults nationally and internationally, in Germany, Italy, Poland, Hungary, England, Benelux, Bosnia, USA, Canada, Russia, Sweden, Norway, Denmark and South Africa.

Contact Details

Lipper Hellweg 29, Bielefeld
33604 Germany

tel 49 (0) 521177044
mob 49 (0) 1722870804
email jan.schuenemann@lifestyle-dentistry.com





Oriol de la Mata y García ^{RDT}

Oriol de la Mata y García was born in Barcelona, Spain, and completed studies as a dental prosthesis technician in Mexico City.

He has been a dental ceramist since 1989, and is the founder and associate of the dental laboratory "Dental Quality". He also owns and runs "Oral Line", another dental clinic in the city of Puebla.

Oriol is a consultant for various companies worldwide and an instructor for Kuraray-Noritake. He has participated in numerous courses and seminars in Mexico and other countries, receiving awards of recognition by influential leaders in the dental field.

He strives to achieve natural reproductions in each of his dental cases.

Contact Details

Calle 12 Número 24
Fraccionamiento San José Vista Hermosa
Puebla, Puebla, México CP 72190

email orioldelamata@hotmail.com



Ricardo Schäfer ^{CDT}

Ricardo Schäfer was born in Buenos Aires, Argentina. He graduated as a dental technician in 1992, receiving the Roberto Carullo prize for being first in his promotion.

In 1994, Ricardo and his siblings opened "Schäfer Dental+Lab", specialising in aesthetics and implant support restorations. It acts as the pilot lab for Amann Girrbach in Argentina and are consultants for various dental firms globally. Ricardo lectures and gives live demonstrations throughout North and South America, and Spain.

He is an active member of 'Damaged Goods' (the Dental Technicians Guild), which promotes excellence and growth in the dental field.

Ricardo believes the only way to develop our art and achieve excellence is through passion and communication.

Contact Details

Achupallas 1193, Temperley (1834)
Buenos Aires, Argentina

tel 54 1142435714

email schaferdentallab@gmail.com





Norberto Ruiz ^{CDT}

Born in Mexico, Norberto completed studies in odontology 20 years ago. He was fortunate enough to begin a bright career as a dental technician, training alongside some of the best technicians in the field; August Bruguera, Gerard Ubassi, Shigeo Kataoka and Kazunobu Yamada.

In 2001 he opened his own lab, Diseño y Estetica Dental in Mexico City. He has greatly progressed in his technique over the years, learning and working with some of the greatest professionals in the industry including Hitoshi Aoshima, Nondas Vlachopoulos and Alek Aronin, all of which have had tremendous influence on his work.

Contact Details

Colina De Mocusari 95, Fracc Boulevares
53140 Naucalpan Edo, Mexico

tel 52 55 55628351
email norberto@dyed.mx



Daniele Rondoni ^{CDT}

Shortly after graduating in 1979, Daniele Rondoni opened his own dental laboratory, out of which he based and founded the AAT Community College.

He is a teacher and counsellor for the Italian School for Dental Technicians, the University of Chieti, the University of Sienna and the University of Rome Tor Vergata, and is an international instructor for Kuraray-Noritake. He has studied under masters such as Oliviero Turillazzi (Italy) and Hitoshi Aoshima (Japan), and has worked extensively in Switzerland and Germany.

Daniele is devoted to the study of morphology and dental aesthetics. He takes an active part in the development of materials used for aesthetic dental restoration, and has published numerous texts on techniques, including his own.

Contact Details

Via Garassino 2/4
17100 Savona, Italy

tel +39 019 821881
email info@danielerondoni.com





Maria Spanopoulou ^{CDT}

Maria Spanopoulou was born in Athens, Greece and graduated in Dental Technology in 2004 at the Technological Educational Institute (TEI) of Athens. Having attended numerous courses and lectures by national and international dental technicians (Nondas Vlachopoulos, August Bruguera, Shigeo Kataoka, Gérald Ubassy, Oliver Brix, Christian Coachman), her focus was to specialise in high aesthetic restorations. She began working as a dental technician in Liechtenstein, after which she became the co-owner of "Advanced Dental Laboratory" in Greece, also the pilot lab of Sirona/Inlab. Maria is a certified instructor and opinion leader for Ivoclar, a Straumann instructor and certified member of the Straumann Lab Academy.

She remains thirsty for knowledge, striving to improve her skills and mimic the magic of nature.

Contact Details

7a Leoforos Pentelis, Vrilissia
15235 Athens, Greece

tel 30 210 6800542
email mariasp_n@yahoo.gr



technē.

Etymologically derived from the Ancient Greek word "ték-ne" that is often translated as "craftsmanship", "craft", or "art".



Javier Vasquez ^{DMD, MICCMO}

For the past 14 years, Dr. Vasquez has integrated his multidisciplinary training in the clinical aspect by using all his expertise of 13 years and accomplishing kinesiographic studies for the mandibular trajectories and the relation with cervical structures. He is an international speaker in the areas of cranio cervical dysfunction, physiologic occlusion, CAD/CAM, smile design and full mouth rehabilitation. He is the creator of the CAD/CAM concept: CAD-Artistry.

"I have been a witness of Sirona's CAD-CAM evolution for 15 years, from both chair and laboratory side. Whatever we dreamed 12 years ago, is a reality today. The capabilities of technology are a fact and are available for us to use. Technology, besides milling my crowns and bridges, supports the proper planning for my cases. SICAT has been the latest, magnificent complement to my profession."

Contact Details

7210 SW 57th Ave. #223
South Miami, FL 33143 USA

tel 1 305 740 6263
email javier@javiervasquez.com

Product Reference

Page 33
CAD Artistry Mixing Palette



Simon Newbold ^{CDT}

Simon commenced his career in the dental industry in 1983 and, within two years, was heading the ceramic department in the lab he was working in at the time.

In 1991 he moved to London's prestigious medical district, Harley Street, to further his career working alongside John Bunyan Snr. and Jr.

He decided to open and run his own dental laboratory while continuing to attend educational courses taught by the best technicians in the industry; Nondas Vlachopoulos, Willi Geller, Andreas Nolte, Naoki Aiba and Sasha Hein, to name a few.

MPF Brush Co. have collaborated with Simon to create the Spin Fix Firing Aid, a stabilizing stand for ceramic crowns.

Contact Details

39 Devonshire, Mews West,
w1g 6qh London, UK

tel 44 2074861969
email simon.newbold@btconnect.com

Product Reference

Page 41
Spin Fix Firing Aid





Andreas Chatzimpatzakis ^{CDT}

Andreas graduated from the Dental Technology Institute (TEI) of Athens in 1999. During his studies he followed a program at the Helsinki Polytechnic Department of Dental Technique, where he trained on implant superstructures and all ceramic prosthetic restorations. By 2000, he was running the “ACH Dental Laboratory” in Athens, specialising in long span implant prosthesis, ceramics and refractory veneers. From 2016, ACH was the co-operating lab with the National and Kapodistrian University of Athens for the MSc degree in Dental Laboratory Materials. Andreas has also conducted several lectures in Greece and abroad, and is an official instructor for Kuraray-Noritake.

Influenced by great technicians in the industry, he continues to work hard on materials and methods, improving his technique to achieve a natural and aesthetic result.

Contact Details

176 Karyatidos St., Peristeri
12135 Athens, Greece

tel 30 210 5062357
email info@ach-dentallab.gr



Leonidas Dimitriou ^{CDT}

After graduating from dental school, Leonidas Dimitriou continued studies at the Department of Dental Technology at the TEI of Athens, where he graduated in 1990.

Owner of the dental laboratory Dentech, he specialises in aesthetic and implant-supported restorations, and continues to be trained in Greece and abroad.

Aside from being a laboratory co-operator for the Department of Dental Technology (TEI Athens), Dentech was also chosen to be the co-operating lab for practical training of metal ceramics for the first semester of the Master of Science Degree in Dental Materials of Dental Technology (run by TEI Athens & the National and Kapodistrian University of Athens). He was made an official instructor for Kuraray-Noritake in January 2017.

Contact Details

1A Lakonias, Peristeri
12134 Athens, Greece

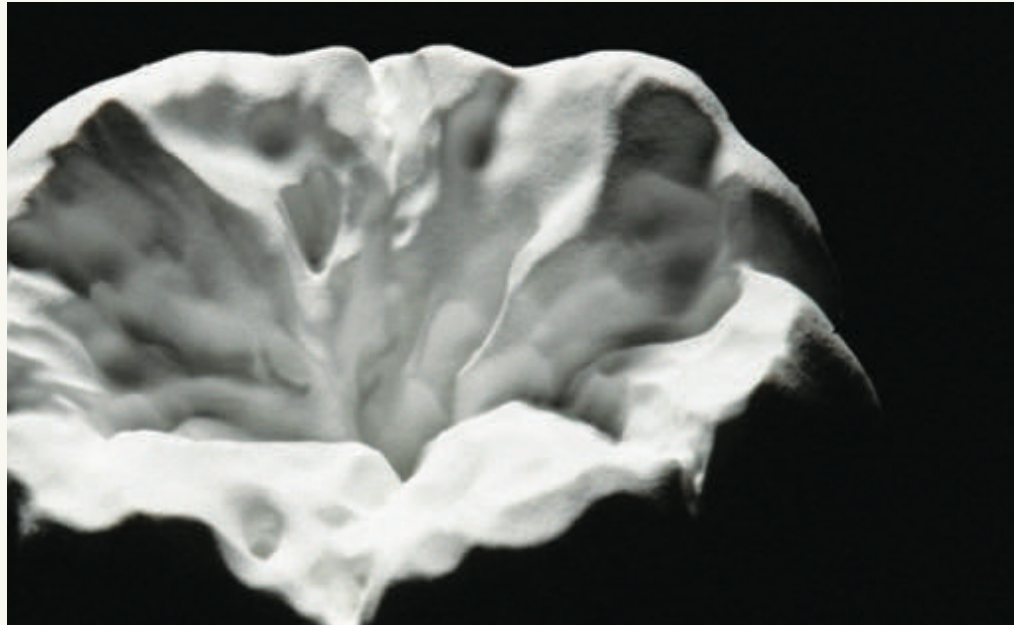
tel 30 210 5774406
email info@dentech.gr



06

Pilot Lab





MPF PILOT LAB

Nondas Vlachopoulos ensures our products function and look impeccable before being released onto the market.

Born in Toronto, Canada, Nondas graduated as a dental technician in Greece in 1985.

He acquired a BSc Hons from the School of Dental Technology of the TEI in Athens. He runs his own dental laboratory "AestheticLab" in Athens, which also acts as the Pilot Lab for MPF Brush Co.

Nondas specialises in aesthetic all-ceramic and implant restorations, and collaborates with the Dental School of the National and Kapodistrian University of Athens and its Postgraduate Programs of Dental Prosthodontics and Dental Surgery. He has organized numerous seminars in Greece, the USA and

Europe, and has participated with presentations in congresses.

Nondas has been the opinion leader in Greece for Noritake, Japan for over a decade. He is also the founder of the Noritake Greek Study Club, which is witnessing immense success and support not only from the local market, but with attendees from around the globe thanks to the organizational skills of Maya Zafiri and the AestheticTeam.

Our collaboration with him has led to the creation of one of the most elite series of products in our range, Optimum™. A range he designed from start to finish, with impeccable attention to detail.

“

My friendship with Nondas spans almost three decades now. I remember telling him that one day, he'd be considered one of the greatest technicians of all time... and I was right! His ability to replicate nature with such accuracy has astonished the industry for many years now. His work becomes ever more refined, his love and passion for what he does is truly unique, and his willingness to share his skills with others in the industry is a blessing. I've been contacted by countless technicians around the world expressing their gratitude for his teachings.

Nondas' attention to detail is evident from the moment you hold any one of the Optimum™ tools in your hand; the ergonomic, perfectly balanced handles make work an absolute pleasure! Not only are they well designed, but the range is also highly aesthetic. A complete reflection of his character!

He developed the Optimum™ handle from start to finish. He'd carve the shape he desired out of aluminum, trying it in his hand, feeling it as it evolved, weighing it to ensure it remained light. I was lucky enough to have witnessed the complete process as it evolved!

Nondas has been a critical player in the evaluation and, on many occasions, the design of many of our products. His hands-on approach gave us the accurate feedback we required before moving on to mass production, a very critical process which can be costly if products are not precise.

We are extremely grateful to have him on our team!

”

George Papadopoulos ^{CDT}
Director

